

# CROWN CU-48 OFF-ROAD SERIES

## Hunting Car owner's manual

### **CROWN CARTS MODEL CU-48 OFF-ROAD SERIES CART**



## DH Hunting Car operation manual

### 1.1 SAFETY NOTICE:

1.1.1 Before operate this car, please read the owner's manual and all safety caution labels carefully. It may be beneficial when learning the operation of your trolley to have an assistant such as a family member or a care professional present. To minimize any personal injury, read all of the following safety precautions prior to driving . NEVER OPERATE AN HUNTING CAR WITHOUT PROPER TRAINING OR INSTRUCTION.

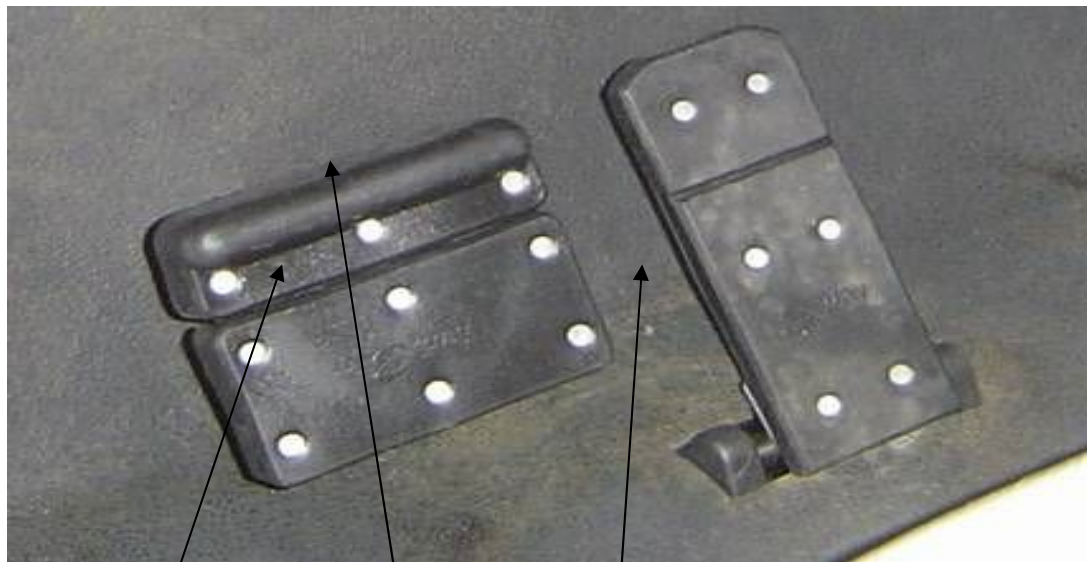
1.1.2 When drive the car in the raining day, please keep low speed and the car distance.

1.2.

1.1.3 Failure to follow the warnings contained in this manual can result in serious injury or death

### 1.2 OPERATE INSTRUCTION

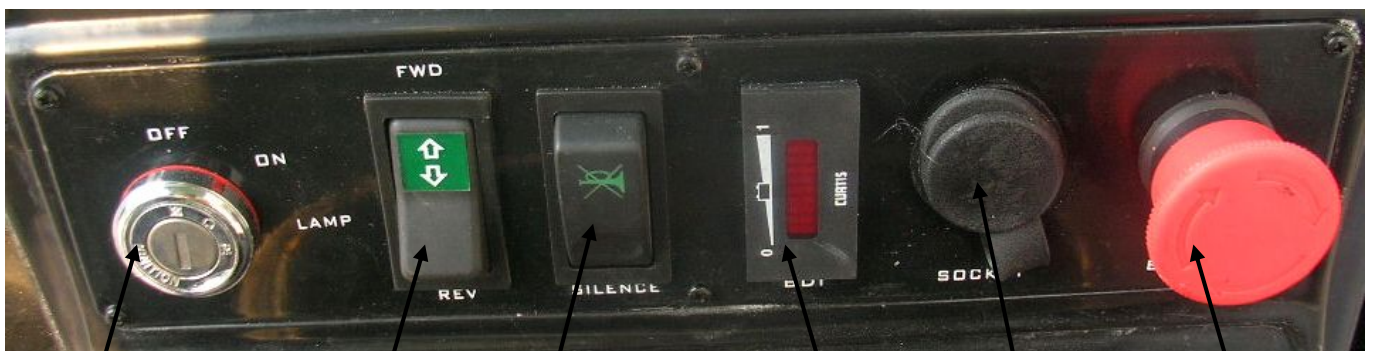
1.1.1 The brake for stop, the brake for station, accelerator and meter panel (See picture 1.2.1 as below)



the brake for stop

the brake for station

Accelerator



On/Off Switch

Direction choice

Reverse silent switch

Power display

DC outlet

Urgent stop switch

Picture 1.2.1

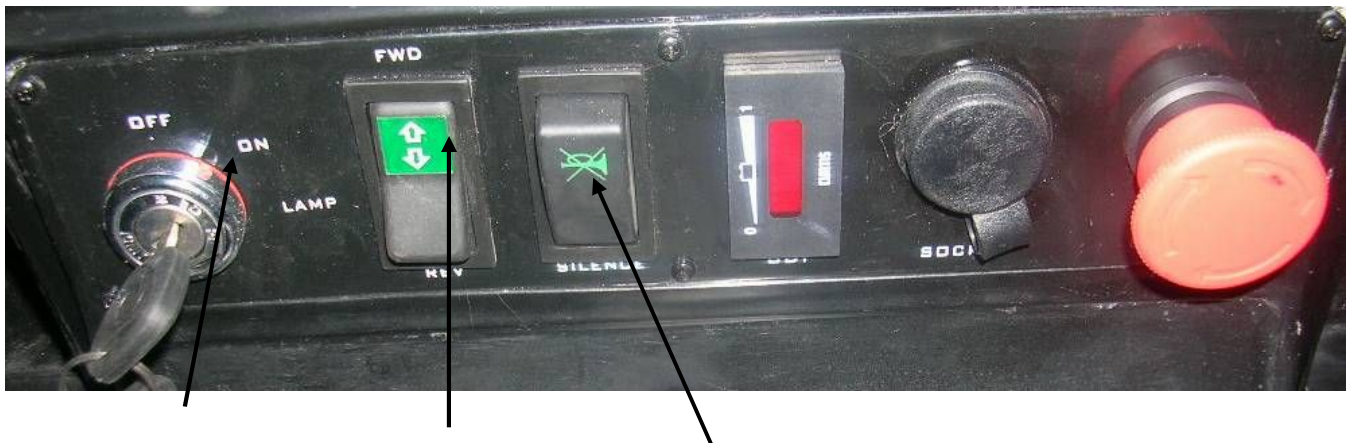


1.2.2 Starting the car: Please follow up the following instruction to start the car:

Firstly, release the brake for station and insert the key then turn the power key switch to “ON”(See picture 1.2.2).

Secondly, push the “ Direction choice” button to “ Forward” location(See picture 1.2.2) and step on the accelerator equably then you can start the car.

**ATTENTION: Do not speed quickly when start to avoid any accident.**



The location of ON

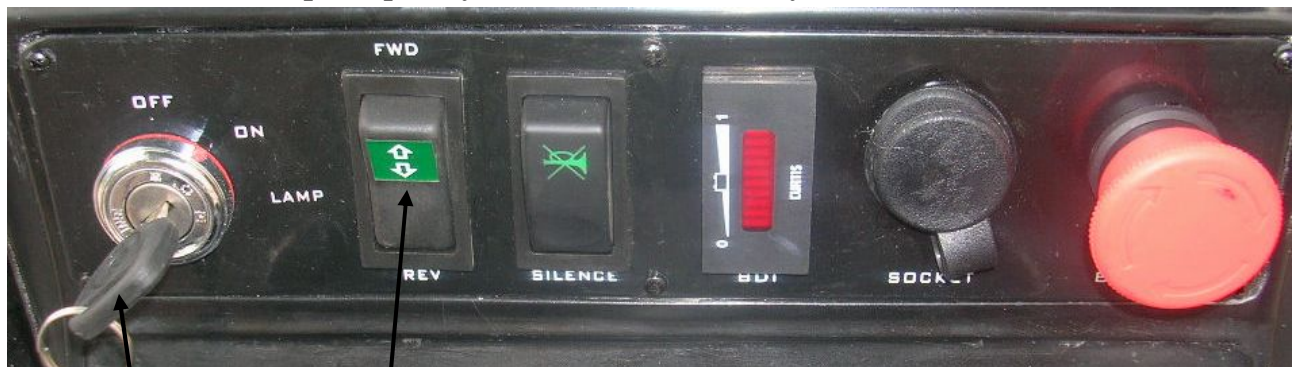
The forward location

Reverse silent switch

Picture 1.2.2

1.2.3 .Reverse: Turn the key to the on location then press the direction switch to backward location (see picture 1.2.3) . In the meantime, the buzzer is working. (if do not need buzzer works when reverse, you can press the reverse silent switch). Then step on the accelerator equably to reverse the car.

**ATTENTION: Do not speed quickly when start to avoid any accident.**



The location of OFF

The backward location

Picture 1.2.3

1.3.4 Stopping: After stop the car, make sure to press the direction switch to the middle location and turn the key to “OFF” position then step on the brake location, and then remove key from the vehicle.

1.2.5 During driving, please choose the speed according to different roads. This car has electric brake function, the speed increases in direct ratio with the corner of the accelerator, Contrariwise, the speed decreases. When climbing down, loosen the accelerator absolutely, the car will slide at the speed of 2-3Km/H, so it is necessary to use the stop brake to assistant. When drive the car in the flat road, just loosen absolutely the accelerator to stop the car.

**DO NOT ADJUST FORWARD AND BACKWARD DIRECTLY DURING DRIVING, the sudden**

**change in forward and backward may endanger you and cause the failure of your vehicle.**

1.2.6 The DC outlet, the voltage is 12V, the loading and rating current is 5A, the loading current for the short time is 10A.

1.2.7 The urgent stop switch is used for the urgent brake in order to deal with the sudden abnormality

1.2.8 The instant travel distance should not more than the distance per charge of the car. Check the electricity of battery from time to time. If it is lack of electricity, do not drive to avoid any damage of battery.

### **1.3 CHARGING THE BATTERY**

1.3.1 Please use the smart charger to charge the battery in order to keep the long life of battery.

1.3.2 Connect the charger input terminal to the rating voltage 220V(50Hz) alternating current and connect the output terminal to the car charge socket. (See 1.3.1)

The green indicator light of charger flickers means that it is charging. The green indicator light is constantly bright means the battery capacity is full. After charge the battery fully, the power supply is cut off automatically in order to avoid over charge. The full charge time is about 8-10 hours.

Notice: Before charge the battery and during charging, make sure the key is on the "OFF" location. Otherwise, the electric control system will be damaged. Do not use water wash the electric control system in order to avoid the short circuit.



charge socket

charger

Picture 1.3.1

1.3.3 If you do not use your trolley for long periods of time, it should be charged at least every three months to keep the batteries in good condition.

1.3.4 While not in use, or in storage the batteries will slowly discharge if not plugged in.

1.4.5 After drive the battery, must charge the battery. In order to prolong the use life, it is better to charge the battery one time per day

1.3.6 Charging time will be affected by the ambient temperature, Therefore it will be longer in the wintertime.

## 1.4 DH-C2 SPECIFICATION:

Motor: 48V 4KW

Dimension : 2530×1300×1800mm

Weight: (without battery) 320KG

Seat: 2

Battery: 6-8V 192AH big capacity deep cycle battery

Accelerator: Non-contact continuously variable speed system

Charger: Switch type smart charger ( when charging, make sure the key is on the OFF location)

Chassis: The jointing instruction of high intensity and square tube.

Frame: Fiber glass (frame cover), PP( sun top cover)

Rear axle: high efficiency gear wheel drives. The shift ratio: 10.64:1

The brake system: the rear wheel arrester, non-asbestos hoof piece, has the Auto-release brake function.

Hanging system: more pieces armor plate spring, hydraulic pressure and reducing shake system

Turning system: single gear wheel turning system, automatic clearance and compensating function.

Meter plate: with power display meter, direction choice switch, DC outlet and warning switch.

Maximum Speed : 35 KM/H

Maximum Travel Distance: 80 KM

Slope Climbing Capacity (full load):  $\geq 30\%$

Axle Distance: 1700 MM

Front Wheel Base: 900 MM

Rear Wheel Base: 990 MM

Swerve radius :  $\leq 3.5$  M

Tires: 20\*10-10 vacuum tires

## 2 The assembly step after open the carton

### 2.1.1 Assemble the front, rear wheel

Put the rear rim four fix holes versus to rear bridge four bolts, mount the nuts and tight them. As picture 2.1.1-2.1.4.



2.1.1



2.1.2



2.1.3



2.1.4

2.1.2 Front bracket and front humper's assembling: as per picture 2.1.5-2.1.7, versus the holes of the front



humper, front bracket of basket , front bracket and rubber washer, then put the bolts and lock them.



2.15



2.1.6



2.1.7

#### 2.1.2 Assemble the front basket

Inset the front basket fixing nuts into the basket base and lock the nuts.. As picture 2.1.8-2.1.10.



2.1.8



2.1.9



2.1.10

#### 2.1.3 Assemble the rear bracket

Versus the below fix hole of the sun top rear bracket to fix hole of the backseat bracket, then use the bolts to lock it. As picture 2.1.11-2.1.13.



2.11



2.12



2.1.3

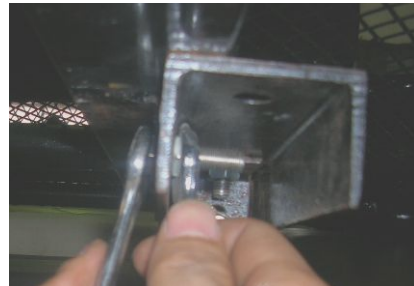
#### 2.1.4 Assemble the rear basket

Put the rear basket on the backseat bracket, versus the fix hole then use the bolts to lock it. As picture 2.1.14-2.1.15.

(Remark: if it is DH-C2+2, it has no this step)



2.1.14



2.1.15

#### 2.1.5 Assemble the sun top cover

Put the sun top cover on the front and rear bracket and versus the fix hole, then use bolts, washer,

suspension mat to lock it. As picture 2.1.16-2.1.19



2.1.16



2.1.17



2.1.18



2.1.19

#### 2.1.6 Assemble the steering wheel

Insert the steering wheel post into the seat steering wheel base, then spin the nuts and lock it, then put steering wheel cover and tighten it. As picture2.1.20-2.1.23.



2.1.20



2.1.21



2.1.22



2.1.23

#### 2.1.7 Assemble the gun rack

Insert the gun rack into the gun rack base and then lock it. As picture2.1.24-2.1.25.



2.1.24



2.1.25

#### 2.1.8 Assemble the windshield

Put the windshield clip on the front bracket, then put the windshield wedge into the bracket, and tighten it. As picture2.1.26-2.1.27.



2.1.26



2.1.27

#### 2.1.9 Assemble the caddie footplate

Put the caddie footplate on the frame and insert bolt as following and tight all bolts, As picture2.1.28-2.1.30.



2.1.28

2.1.29

2.1.30

2.1.9 The cart picture. (2.1.31)



DH-C2

2.1.31